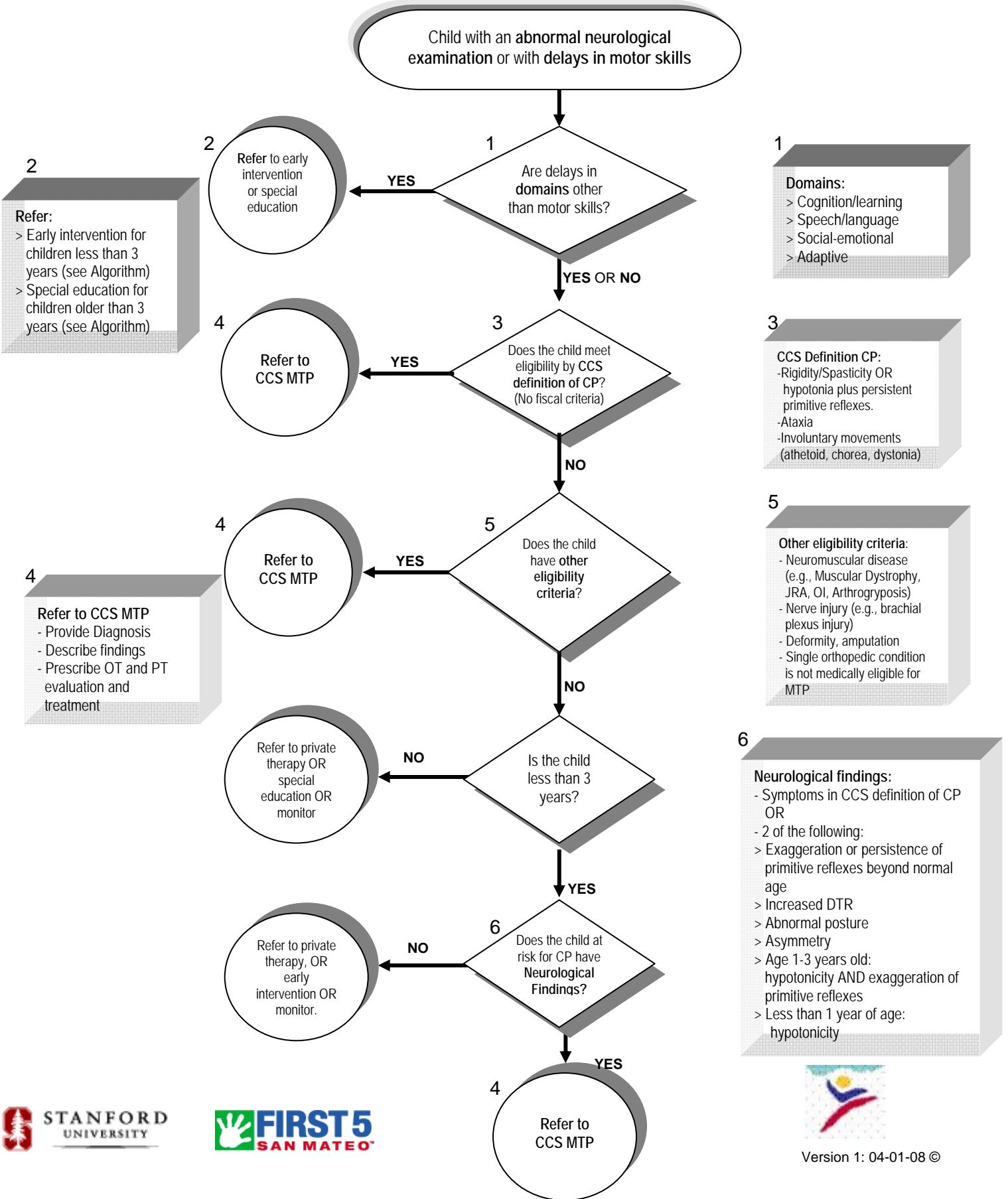


Accessing CCS Medical Therapy Program (CCS MTP): A Pathway for Health Professionals

(Numbers refer to the explanatory boxes at sides of the page)



2
Refer:
> Early intervention for children less than 3 years (see Algorithm)
> Special education for children older than 3 years (see Algorithm)

1
Domains:
> Cognition/learning
> Speech/language
> Social-emotional
> Adaptive

3
CCS Definition CP:
-Rigidity/Spasticity OR hypotonia plus persistent primitive reflexes.
-Ataxia
-Involuntary movements (athetoid, chorea, dystonia)

4
Refer to CCS MTP
- Provide Diagnosis
- Describe findings
- Prescribe OT and PT evaluation and treatment

5
Other eligibility criteria:
- Neuromuscular disease (e.g., Muscular Dystrophy, JRA, OI, Arthrogyposis)
- Nerve injury (e.g., brachial plexus injury)
- Deformity, amputation
- Single orthopedic condition is not medically eligible for MTP

6
Neurological findings:
- Symptoms in CCS definition of CP OR
- 2 of the following:
> Exaggeration or persistence of primitive reflexes beyond normal age
> Increased DTR
> Abnormal posture
> Asymmetry
> Age 1-3 years old: hypotonicity AND exaggeration of primitive reflexes
> Less than 1 year of age: hypotonicity

